

## Make a Kaleidoscope



To explore the vibrant and confident use of colour in an exhibition of new works by well loved Swansea based artist Glenys Cour, we held a Kaleidoscope making workshop during the Christmas holidays in 2012!

By making a simple prism the paintings were transformed into changing and mesmerising geometric patterns!

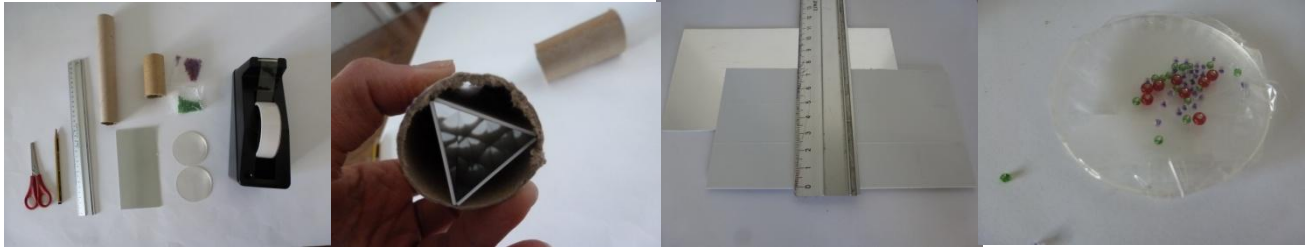


### What you need:

2 different sizes of Cardboard tube which fit inside each other  
Plastic mirror  
Ruler  
Pencil  
Clear Sticky tape  
Plastic lenses or Petri dish  
Beads& sequins

- 1) Measure and score lines on the back of the plastic mirror which will allow a prism to fit within the smaller tube.
- 2) Fold the plastic mirror into a prism which will fit inside the smaller a tube and stick with tape.
- 3) Put beads and sequins into the Petri dish or plastic lenses and seal with clear sticky tape.

- 4) Stick the lens filled with beads to the larger tube and fit the larger tube onto the end of the smaller tube.
- 5) Decorate!
- 6) Use your kaleidoscope to marvel at the world around you!



Oriel Myrddin Gallery, Church Lane, Carmarthen SA31 1LH 01267 222775 • orielmyrddingallery.co.uk  
Monday – Saturday 10–5 • Admission is free

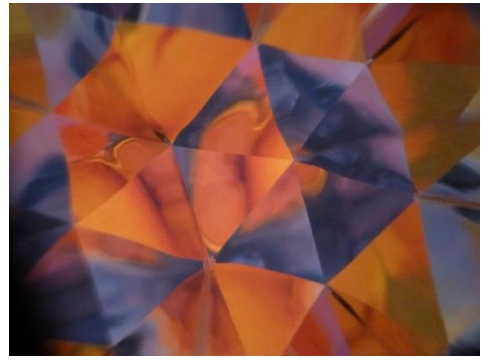
Oriel  
Myrddin  
Gallery

## Creu Caleidosgop



Er mwyn archwilio defnydd bywiog a hyderus o liwiau mewn arddangosfa o waith newydd gan yr artist poblogaidd o Abertawe, Glenys Cour, roeddem wedi cynnal gweithdy creu Caleidosgop yn ystod gwyliau Nadolig 2012!

Drwy wneud prism syml, trawsffurfiwyd y paentiadau yn batrymau geometrig newidiol a chyfareddol!



Yr hyn sydd ei angen arnoch:

2 diwb cardbord o wahanol feintiau sy'n ffitio i'w gilydd

Drych plastig

Pren mesur

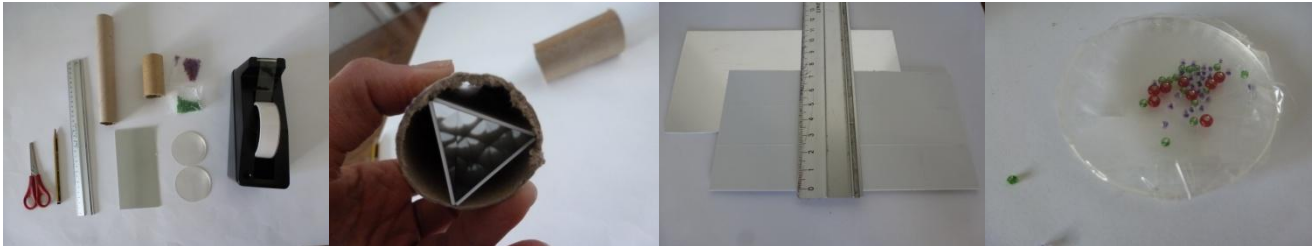
Pensel

Tâp gludiog clir

Lensys plastig neu ddysgl Petri

Gleiniau a secwinau

- 1) Mesurwch a chrafwch linellau ar gefn y drych plastig a fydd yn caniatáu ichi ei blygu'n brism a fydd yn ffitio y tu mewn i'r tiwb llai.
- 2) Plygwch y drych plastig yn brism a fydd yn ffitio y tu mewn i'r tiwb llai a'i lynu â thâp.
- 3) Rhewch leiniau a secwinau yn y ddysgl Petri neu'r lensys plastig a'u selio â thâp gludiog clir.
- 4) Glynwch y lens sydd wedi'i llenwi â gleiniau i'r tiwb mwy a gosodwch y tiwb mwy ar ddiwedd y tiwb llai.
- 5) Addurnwch eich caleidosgop!
- 6) Defnyddiwch eich caleidosgop i ryfeddu at y byd o'ch cwmpas!



Oriel Myrddin, Lôn y Llan, Caerfyrddin SA31 1LH 01267 222775 • [orielmyrddingallery.co.uk](http://orielmyrddingallery.co.uk)  
Dydd Llun i Ddydd Sadwrn 10–5 • Mynediad am ddim